



BOUTIQUE  
CARAVANS

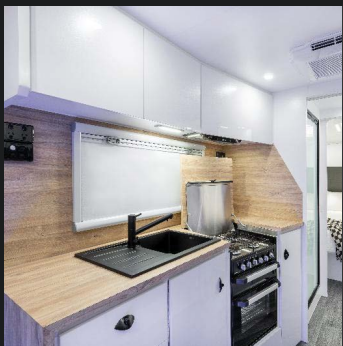
*Boutique*  
**TRACKHAWK**  
22 Ft

[www.boutiquecaravans.com.au](http://www.boutiquecaravans.com.au)



**1800 418 593**

[sales@boutiquecaravans.com.au](mailto:sales@boutiquecaravans.com.au)



Modern Kitchen  
Appliances



Contemporary  
Design Furniture



Premium Finish  
Design Features



Off Road chassis  
Independent Suspension

## CHASSIS

- Extended A Frame
- 6 Inch Chassis
- Tandem Axle
- Jockey Wheel
- Full off Road Cruisemaster XT Suspension
- Supergal Off-Road Chassis
- Mud/All- Terrain Tyres on 16' Custom Wheels (Spare Wheel Included)
- Cruisemaster DO35 V3 Coupling with Integrated Handbrake
- Drop-down Stabiliser Jacks
- Galvanised 3-Arm Bumper Bar
- with Spare Wheel
- Steel entry step
- Breakaway Safety System
- Electric Brakes to all Wheels

## EXTERIOR

- Marine-grade Smooth Finish
- Composite panels
- Boutique signature One Piece Fiberglass Roof
- Easy to use premium Awning
- Heavy Duty Mudflaps
- High Checker Plate Body Armor & Wheel Spats
- Grab Handles
- CrimSafe Triple-Lock Entry Door with Aluminium Security Mesh & Blind
- Tinted Sleek Flat-pane Double Glazed Windows
- Boutique Vinyl Decal Kit
- External entertainment pack
- TV Point & External Speakers
- Bubble Light Grab Handle
- Picnic Table with LED Lighting
- Pull-Out Step
- Extra Large Toolbox with Double sided Slide-Out Storage
- Safety Dave Reverse Camera with Monitor

## INTERNAL

- Uniquely Designed Ergonomic Floorplan. Alternative layouts available
- Boutique signature One piece Honeycomb core waterproof Floor
- Upgraded Contemporary Matte Black Sinks, Taps, Shower & Hardware Pack
- Filtered Water

- Gas Strut Overhead Cupboards & Soft Close Drawers
- Premium Range Laminate
- Bench Tops
- European-made vinyl flooring (huge range of colours/styles available)
- Midgee Proof Mesh & Block Out Blinds
- Modern & Contemporary Furniture with Boutique Caravans Premium Cabinetry
- Residential Grade Piano Hinge Assembly
- Premium Lounge Seating
- Ceiling Mount Speakers
- Bedroom Pigeonholes with One-X USB PowerPoints
- Bedroom & Bunk Fans
- Double Glazed Windows
- Reverse Cycle Fans in Shower/Ensuite
- 2x Skylights
- Queen Size Pillowtop Innerspring Mattress
- Soft Panel Triple Bunk Beds
- Safety Pack: Smoke Alarms & Fire Extinguisher

## APPLIANCES

- Top of the range Bushman 194L Compressor Fridge
- Swift Full Oven/Griller/ Cooktop
- Slimline Rangehood
- 25LTR Microwave
- Reverse Cycle Heating & Cooling
- 3.3KG Frontload Washing Machine
- Premium sound package
- Bluetooth/USB/CD/Radio with Internal & External Speakers

## ELECTRICAL

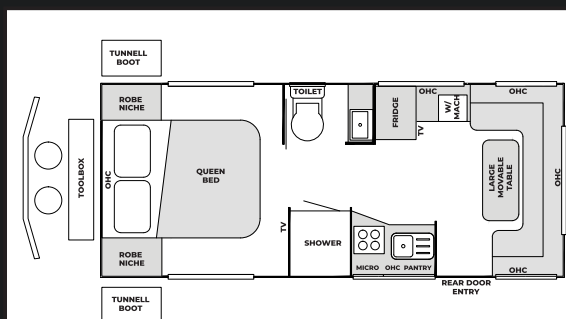
- Complete LED Lights
  - Downlights
  - Reading Lights
  - Tunnel Boot Lights
  - Strip Lighting
  - Anti-Insect Annex Lights
  - Front & Rear Work lights with External Switch
- 12 Pin plug with Anderson plug
- One-X USS PowerPoint throughout Double Pole PowerPoints
- External power point
- Arizon - Victron Energy (Micro Board)
- BM Pro Trek3 Display
- 2x 200W Solar Panels
- 2x 120ah AGM Batteries
- Winegard antenna

## PLUMBING

- Swift Gas and Electric How Water System Thetford Ceramic Toilet
- One Piece Fiberglass Shower
- 2x 95LTR Fresh Water Tanks
- 1x 95LTR Grey Water Tank
- Dual Gas Bottles
- Water Tap On A-Frame

## WEIGHT AND DIMENSIONS

Tare: 2750 kg  
Ball Weight: 200kg  
ATM: 3500kg



**22 Ft Rear Door Entry  
Rear Club Lounge - Couples Van**

## COUPLES VAN REAR DOOR ENTRY

**22 Ft**  
Rear Door Entry - Couples Van

**Full Off Road**  
North, south bed